

# Alaska Department of Fish and Game

Habitat Section  
Southeast Region



## 113-51-10040 Tributary 6

## ADDITION

**Water body name:**

**Quad:** Sitka-C4

**Upper Reach Latitude:** 57.537067 **Longitude:** -135.175599

**Lower Reach Latitude:** 57.536535 **Longitude:** -135.180080

**Survey date:** 8/3/2023

**Species & Lifestage:**

**Survey crew:** FC, NJ

**Findings:** We surveyed this uncataloged stream using baited minnow traps and GPS and captured juvenile coho salmon. This stream is conveyed through a corrugated plastic pipe culvert at the road crossing. Water is ponded on the upstream side of the road, potentially from a nearby beaver complex. The culvert outlet was slip lined with a downward facing L-shaped metal pipe (Table 1; Figures 1–3). Baited minnow traps were used further upstream at the road crossing at waypoint 447, but no fish were caught; I recommend future investigation as fish habitat may continue.

**Recommendations:** Add this uncataloged stream to the anadromous waters catalog for rearing coho salmon up to waypoint 428 (Figure 4).

**Nomination:** Pending

Table 1.–113-51-10040 tributary 6 survey data.

Waypoint	Latitude	Longitude	Notes	Stream Width ft	Stream Substrate	Habitat Features	Gradient %	Sample Effort	Sample Results
428	57.537071	-135.175619	Minnow trap soaked 1-2' deep in ponding upstream of slip-lined downward L-shaped culvert outlet; follow up.		Fine Organic	Beaver Pond	1-2	MT	2 CO
447	57.537502	-135.175341	Minnow traps soaked downstream and upstream of 3' CSP at top of beaver pond complex.		Fine Organic	Beaver Pond	0-1	MT	



Figure 1.–Juvenile coho salmon caught at waypoint 428.





Figure 2.—Culvert inlet at waypoint 428.



Figure 3.—Culvert outlet at waypoint 428.



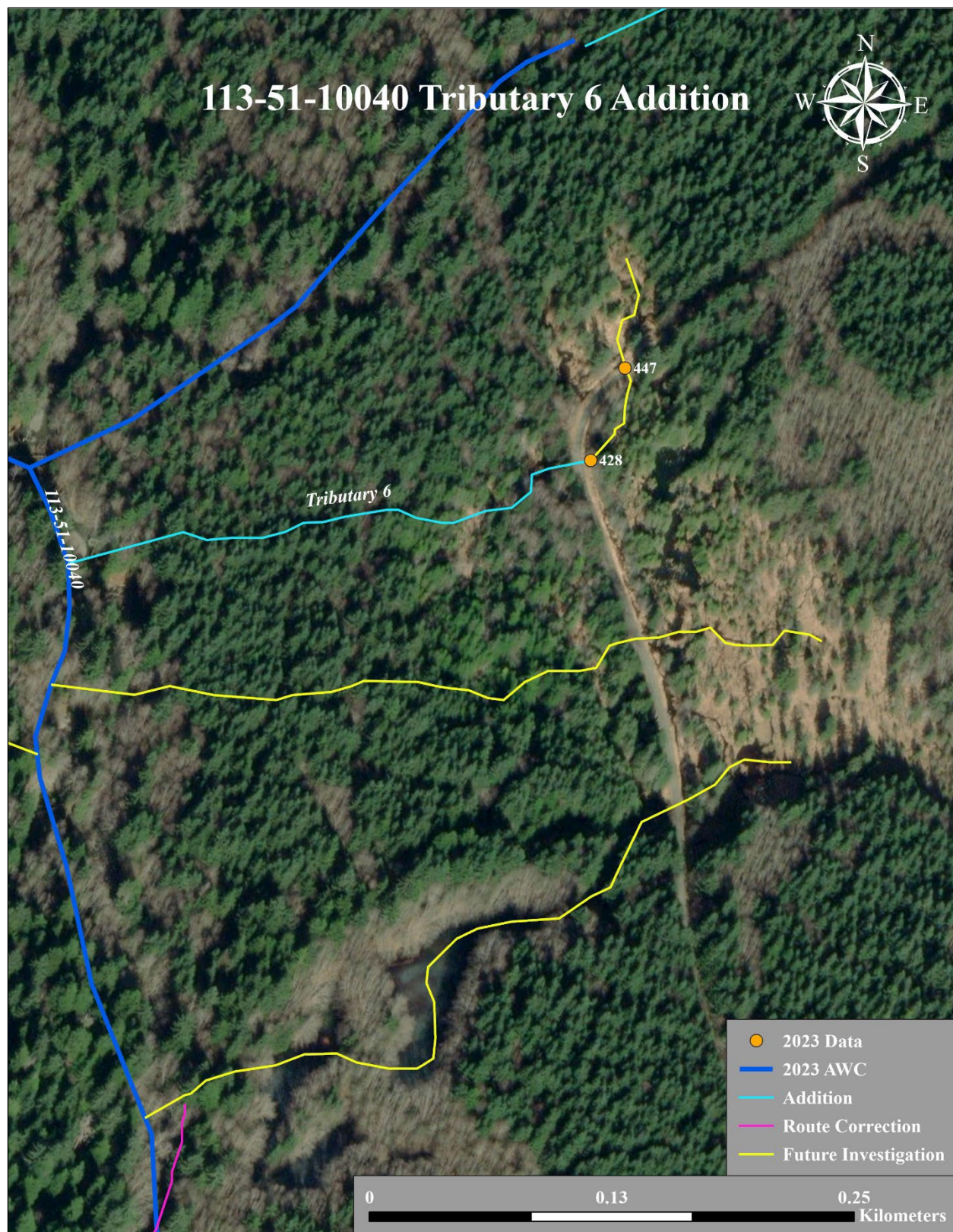


Figure 4.—Stream No. 113-51-10040 tributary 6 addition map.